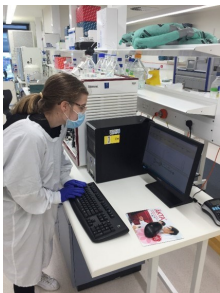
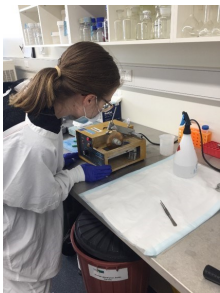
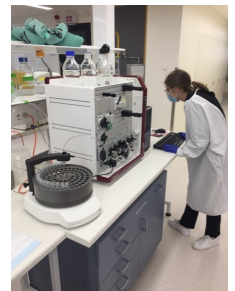


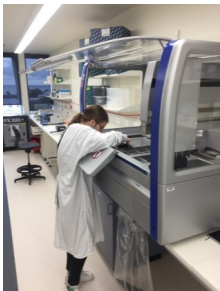
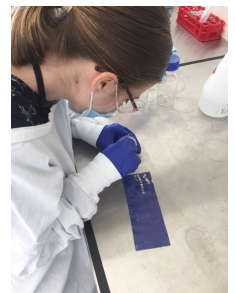
*Once again thank you to Barwon Health who support our students studying Laboratory Skills and Engineering (mechanical). Recently Dr Jason Hodge provided one week of work experience in the lab for Eliza who was very fortunate to have this experience to add to her regular mentoring sessions at ALS. Check out the various opportunities she was given.*



Performing routine, weekly maintenance of a protein chromatography unit that is used to separate complex solutions of proteins from blood into individual tubes in a rotating fraction collector.



Using a diamond-tipped wafering blade to cut thin slices of sperm whale tooth, from which 6mm disks are punched. These bone disks are then used as a substrate on which human bone cells call "osteoclasts" (bone dissolving cells) are cultured.



Preparing a DNA-extraction robot to process infant fecal samples for subsequent sequencing and analysis of the gut microbiome

Learning the basics of protein-measurement assay named in Eliza's honor with Dr. Luba Sominsky! This assay is called an ELISA (Enzyme-linked immunosorbent assay) and is a very sensitive and accurate method to measure the amount of a particular protein of interest in blood samples.

